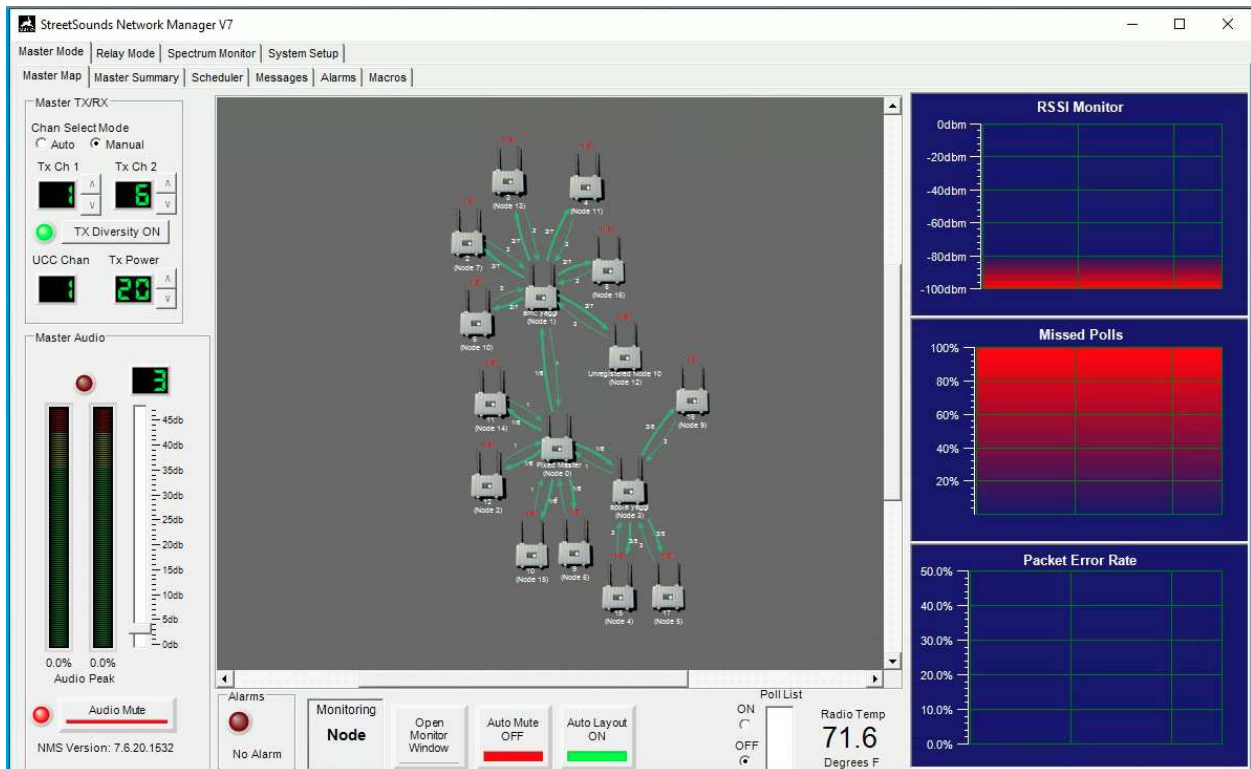


Network Management System

Event Mode Switching Procedure



Overview

The StreetSounds system has two basic modes of operation:

Daily Background Music

In Daily Background Music mode the StreetSounds system uses the Primary Fixed Master Transmitter as the Master for the network. In this mode the Primary Fixed Master is optimized to communicate with all of the remotes, either directly or via repeaters.

Special Event Mode

In Special Event Mode the Primary Fixed Master is manually reconfigured to be a Repeater. It will listen for a transmission from a “Secondary Master Transmitter”, then repeat this signal to all of the remote units that it normally communicates with during Daily Background Music mode. Thus, there is no reconfiguration required of the bulk of the network.

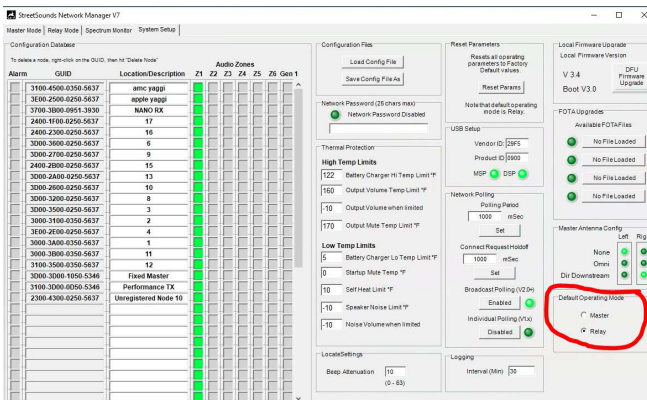
The Secondary Master Transmitter can be one of several different StreetSounds transmitters; 1) another Fixed Master Transmitter, 2) a Mobile Master Transmitter, or a NANO Transceiver.

Pre-configuring the Primary Fixed Master Transmitter

In switching from Daily Background mode to Special Event Mode the Primary Fixed Master Transmitter must be pre-configured to listen to a certain channel that is being sent from the Secondary Master Transmitter. This pre-configuration needs only to be done once. After this is done, all that is required to switch modes is to select the “Relay” tab on the NMS that is connected to the Primary Fixed Master Transmitter.

To pre-configure the Primary Fixed Master Transmitter you must have the Secondary Master Transmitter in close proximity to the Primary Fixed Master Transmitter. The following procedure should be followed:

1. While connected to the Primary Fixed Master, set the Default Operating Mode of the NMS to Relay.



streetsounds

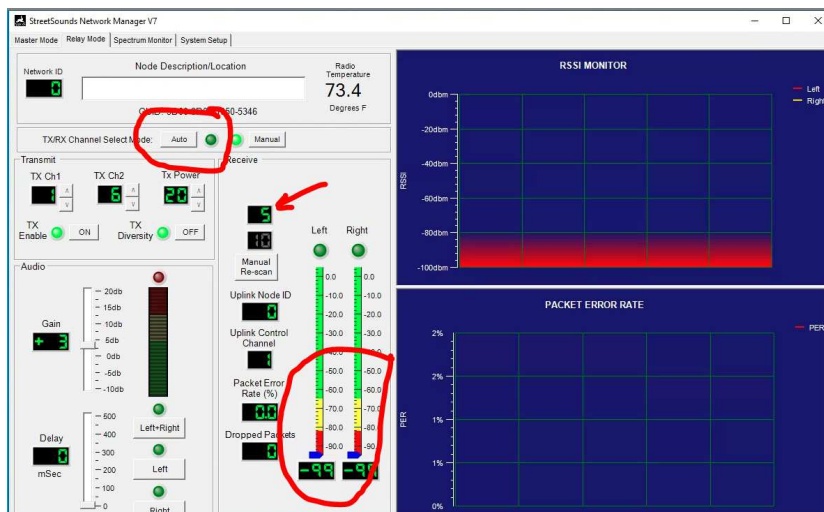
Music for Your Main Street

The reason for this is that the Fixed Master, when in Relay mode, will self-reset after 30 seconds of not receiving a signal. When it does self-reset, it will go into the operating mode defined by this setting. Therefore, if the Secondary Fixed Master is not transmitting within the 30 second window, the Fixed Master will self-reset and return the Relay mode instead of trying to become the network Master transmitter again.

2. Select the "Relay" tab on the NMS while it is connected to the Fixed Master Transmitter.



This will switch the Primary Fixed Master into Relay mode. However, the Fixed Master must be manually configured to receive the specific channel that the Secondary Master Transmitter is transmitting on.



3. Turn on the Secondary Fixed Master Transmitter to the selected channel. To do this you may need to temporarily connect the NMS to the Secondary Master to properly configure its transmit channel.

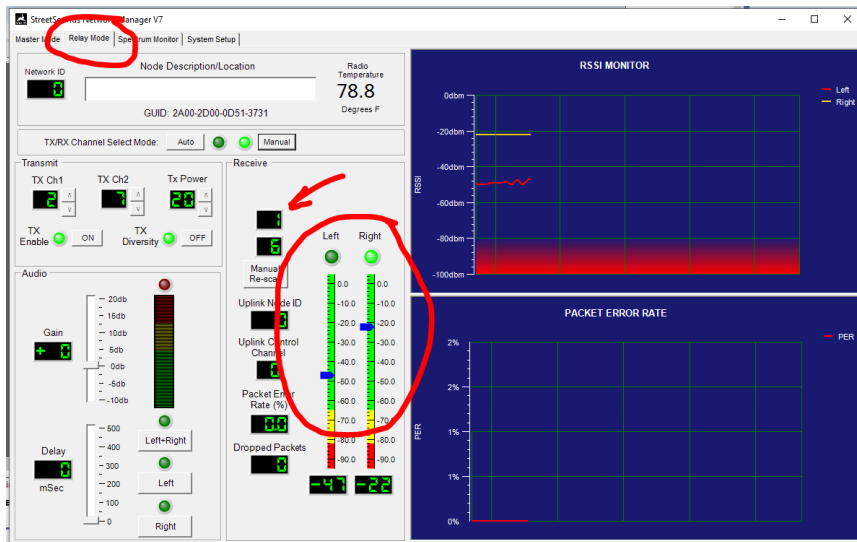
- Once the Secondary Master is transmitting, reconnect the NMS to the Primary Fixed Master. Temporarily set the Primary Fixed Master to "Auto" channel select mode. This will allow the Primary Fixed Master to receive the signal being transmitted by the Secondary Fixed Master.
- When the signal is being received by the Primary Fixed Master, set the TXRX Channel Select Mode back to Manual. The Primary Fixed Master is now configured for Special Event Mode.

Locating the Secondary Fixed Master Transmitter

A critical part of the Special Event Mode re-configuration is to make sure the Secondary Master Transmitter is within "range" of the main Fixed Master Transmitter's antennas. This "range" will depend upon not only distance from the Fixed Master antennas, but look-angle (ground to roof), obstructions (people, buildings, automotive traffic, and local interference). Normally the Secondary Fixed Master is directly below the roof-mounted Fixed Master Transmitter. In this case a simple switch of the NMS from "Master Mode" to "Relay Mode" is all that is required to switch from Daily Background Mode to Special Event Mode.

Switching to Event Mode

Once the pre-configuration of the Primary Fixed Master Transmitter has been done (see above), switch the Primary Fixed Master to Relay mode using the NMS connected to the Primary Fixed Master. If not already transmitting, set the Secondary Fixed Master to Master Mode (this can be done ahead of time using the NMS. This setting will be stored so that NMS is not required after the initial setup of the Secondary Fixed Master). Once the Secondary Fixed Master is transmitting, verify that the Primary Fixed Master is receiving its signal, has good margin, and is not dropping packets as shown below.





Switching Back to Daily Background Music Mode

All that is required to switch the Primary Master back to Daily Background Music Mode is to click on the Master Mode tab at the top of the NMS screen.

Don't forget to turn off the Secondary Master Transmitter if it is not being used..